

WELCOME PACK 2024

Contact us on

+254 (0) 716171 698

admin@miremaschool.ac.ke

Office Hours

Weekdays: 7:30 am - 4:00 pm

Saturdays: 8:30 am - 12:00 pm

TABLE OF CONTENTS



WELCOME TO MIREMA SCHOOL	04
OUR VISION AND MISSION, ETHOS AND VALUES	05
THE PORTRAIT OF A MIREMA SCHOOL GRADUATE	07
OUR CURRICULUM	09
LEARNING SUPPORT	11
MENTORSHIP AND CHAPLAINCY PROGRAM	11
OUR BOARDING HOUSE	12
OUR MENU	13
FEE STRUCTURE FOR LITTLE CABIN PLAYGROUP (BELOW 3 YEARS) & RECEPTION (3-4 YEARS)	14
FEE STRUCTURE FOR KINDERGARTEN, LOWER SCHOOL & MIDDLE SCHOOL	15
FEE STRUCTURE FOR JUNIOR SECONDARY SCHOOL	16
FEE STRUCTURE FOR AGE-BASED MODIFIED CBC (SPECIAL NEEDS EDUCATION)	17
FEES STRUCTURE FOR STAGE-BASED CBC (SPECIAL NEEDS EDUCATION)	18
SCHOOL TRANSPORT SERVICE	19
CLUB GUIDE	20
UNIFORM GUIDE	21
OUR ADMISSION PROCESS	21
SCHOOL FEES POLICY AND HOW TO MAKE PAYMENTS	22

WELCOME TO MIREMA SCHOOL



Mirema School is a Private Primary and Junior Secondary School that was established in 1997. We are a non-denominational Christian School whose role is to support parents in fulfilling their biblical responsibility to educate their children. We aim to develop children who have a biblical worldview and are well prepared academically by integrating God's teachings and principles with academic pursuits.

We offer the Kenyan curriculum, with levels starting at:

- Preschool (Play-group, Reception, Pre-primary 1 and 2)
- Lower School (Grades 1-3)
- Middle School (Grades 4-6)
- Junior Secondary School (Grades 7-9)

Moreover, we have a Special Needs unit that caters for children with a range of special needs. We use Integrated and Inclusive models depending on the needs of the child. A placement assessment is undertaken, and carried out by our team of Special Needs Teachers and Occupational Therapist. The results of this assessment provide the guidance to place learners based on their age, ability, and particular challenge (Autism, Dyslexia, Mild Cerebral Palsy, Downs Syndrome etc). Learners with special needs have two pathways under the new local curriculum namely:

- The academic pathway with modifications (Age-based)
- Special Needs Education (SNE) path whose end goal is vocation (Stage-based)

Pathway placement is determined by the School Function Assessment and specialists' assessment recommendations.

Mirema School Junior Secondary School provides a nurturing space for learners in Grade 7, 8 and 9 to flourish academically, socially and personally. Our experienced teachers are keen on walking closely with the pioneer classes to help them achieve their goals.



OUR VISION AND MISSION, ETHOS AND VALUES

VISION

Our Vision as a school is clear:

To be the leading institution that facilitates and empowers individuals to realize their maximum God-given potential.

MISSION

We achieve this through our Mission;

We offer holistic education aimed at raising champions who are grounded in Godly character, committed to purpose and excellence, and who act courageously to bring about change.





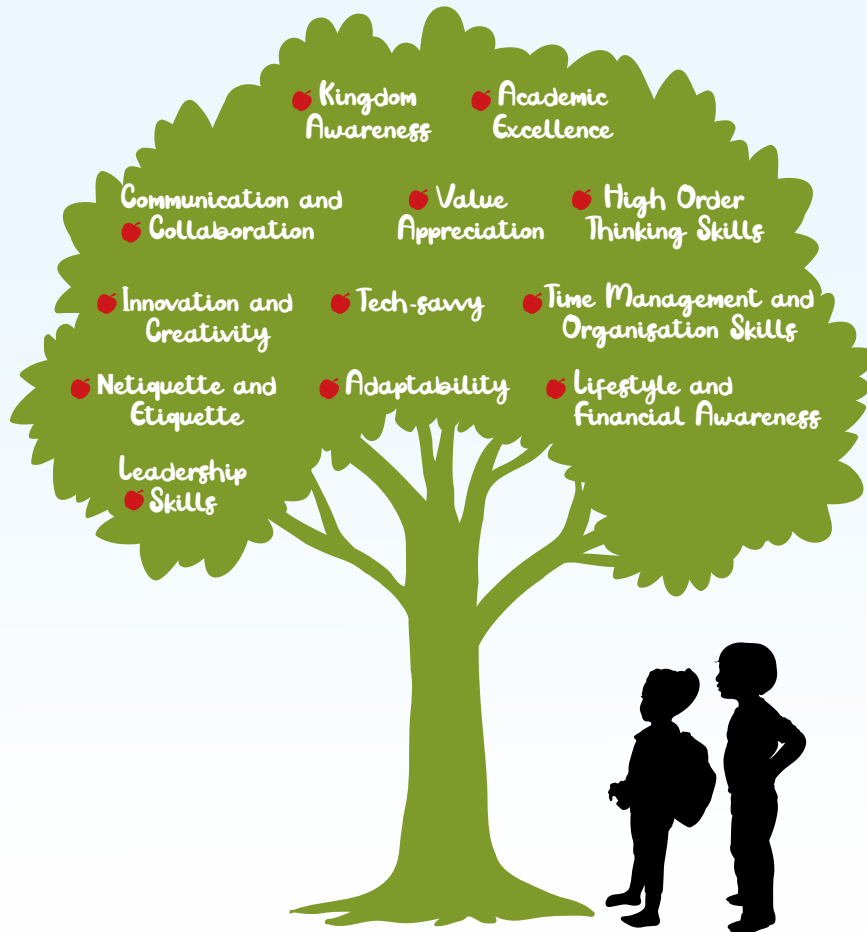
THE PORTRAIT OF A MIREMA SCHOOL GRADUATE

At Mirema School, we are intentional about the attributes (we call them PROFICIENCIES) that we would like our graduates to possess. These proficiencies form the Portrait of the Mirema School Graduate. This portrait guides and defines our teaching and learning efforts as a school.

Proficiencies of a Mirema School Graduate:

- 1. Kingdom Awareness:** Consciously lives within God's will for their life (doing the right thing, the right way, at the right time).
- 2. Academic Excellence:** Goes beyond their academic targets and displays mastery of skill and expertise in an area of study.
- 3. Communication and Collaboration:** Has the ability to pass messages clearly, either orally or in writing with the ability to rally others towards a goal.
- 4. Value Appreciation:** Recognises the esteeming traits that build Godly character in their lives.
- 5. High Order Thinking Skills:** Has the ability to translate concepts to products; and theories to practice, to produce results.
- 6. Innovation and Creativity:** Finds new ways to do things and solve problems through originality and resourcefulness.
- 7. Tech-savvy:** Is computer-literate and has the ability to use technology across multiple devices to achieve a desired goal.
- 8. Time Management and Organisation Skills:** Able to allot time to daily activities and follow through with the plan.
- 9. Netiquette and Etiquette:** Recognises the expected proper social/official conduct concerning events and interpersonal relationships, both online and in person.
- 10. Adaptability:** Able to adjust and act appropriately in changing circumstances so as to achieve a predetermined goal
- 11. Lifestyle and Financial Awareness:** Has an understanding of the requirements for health and financial fitness in order to function optimally.
- 12. Leadership Skills:** Able to inspire others to pursue a clearly stated goal with enthusiasm, and deliver results.





These proficiencies are captured by our Pillars:



ACADEMIC
EXCELLENCE



TALENT & SKILL
DEVELOPMENT



CHARACTER TRAINING
& MENTORSHIP



LEVERAGING
TECHNOLOGY

OUR CURRICULUM

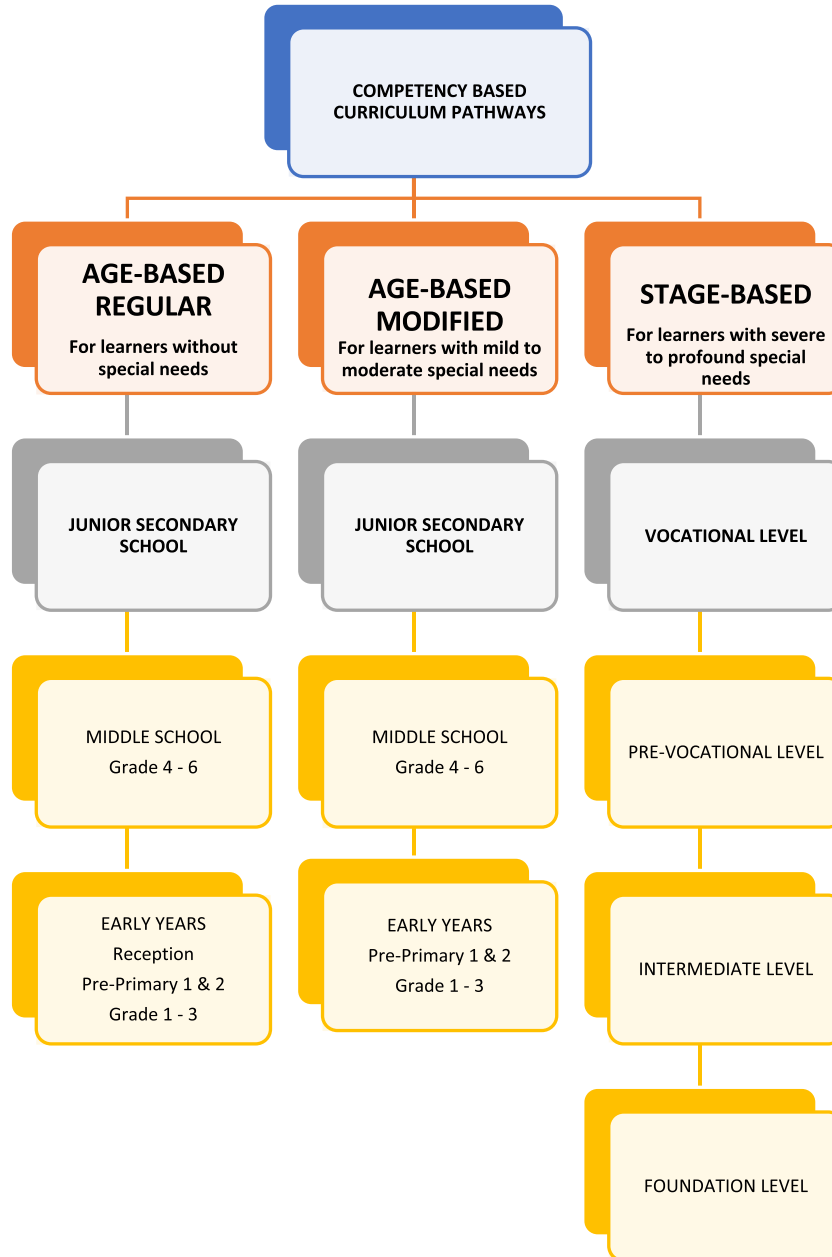


At Mirema School, we offer a broad and balanced curriculum that provides opportunities for learners to gain knowledge across a wide range of learning areas, and develop key, transferable, lifelong skills.

Students at Mirema School are happy, and have the opportunity to flourish in a supportive and positively challenging environment. Our Academic Leaders and their teams carefully plan the curriculum to ensure that all our children make rapid and sustained progress, regardless of their individual abilities. Targets are set and reviewed regularly, and successes celebrated even as support plans are put in place where required.

Our curriculum enables learners at Mirema School to:

- Have high aspirations for themselves
- Enhance their knowledge of God and His place in their lives
- Become curious and inquisitive
- Develop high levels of numeracy and literacy skills
- Develop holistically (socially, morally, spiritually and culturally)
- Maintain healthy levels of confidence, particularly in making choices
- Gain an appreciation of our Kenyan and African culture, in tandem with the global context.



LEARNING SUPPORT

Additional learning support is about giving children the help they need to do well in school, when they need it. At Mirema School our teachers work closely with learners in order to diagnose areas where they may need support. When required, a support program is developed and implemented for an agreed period with regular reviews, in order to meet the agreed targets. Alongside the teaching staff, we offer support from our Occupational Therapist, Speech and Language Therapist, and a Registered Nurse.

MENTORSHIP AND CHAPLAINCY PROGRAM

At Mirema School, we take pride in the level of mentorship that we provide to our children. Our staff take time to get to know the learners and to support them in their journey through school. Our chaplaincy team offers guidance and support on a one-on-one basis or in groups, facilitating a range of activities and acting as key support for learners that require emotional and behavioural support. As a Christian school, our goal is to encourage our children to live out their faith within the school community and beyond the Mirema School gates.

In order to achieve this, our staff also receive regular chaplaincy support and training sessions to ensure alignment with the school's Vision, Mission and Values.



OUR BOARDING HOUSE

Our Boarding House is a state-of-the-art facility that offers a home away from home. We welcome students from all over the world to become a part of the Boarding House family!

Our Boarding House schedule provides a balance between study, rest and fun, with allocated times for homework, revision, cleanliness, outdoor activities and entertainment.

Learners will have the opportunity to expand their horizons outside the classroom in our co-curricular activities.

As learners join the self-contained Boarding House, with flexible options for Weekday or Full boarding, they will receive orientation and their parents/guardians back at home will be able to follow up on their progress via the designated Boarding House telephone line.

Mirema School reserves the right to admit learners into the boarding house. Admission is dependent on assessment and recommendation of the management.



OUR MENU



	BREAKFAST (For Boarders)	10.00 A.M	LUNCH	4.00 P.M (For Boarders)	SUPPER (For Boarders)
MONDAY	Tea Bread Boiled Egg	Hot Chocolate Mandazi	Rice Lentils (Kamande) Vegetables Fruit in season	Tea Popcorn	Green Mukimo Stir Fried Beef Strips Vegetables
TUESDAY	Tea Arrow Roots Sausages	Hot Chocolate Tea Scones	Ugali Beef Stew Vegetables Fruit in season	Tea Slice of Cake	Pilau Carrot Salad
WEDNESDAY	Tea Bread	Hot Chocolate Sweet potatoes	Rice Chicken Vegetables Fruit in season	Tea Arrow Roots	Ugali Fish Vegetables
THURSDAY	Tea Bread	Porridge	Chapati Lentils (Kamande) Fruit in season	Tea Sweet Potatoes	Rice Beef Stew Vegetables
FRIDAY	Tea Bread Spread With Jam Smoked Sausage	Hot Chocolate Mandazi	Pilau Sauce Steamed Cabbage Fruit in season	Tea Scones	Mashed Potatoes Meat Balls Vegetables
SATURDAY (For Boarders)	Tea Bread Boiled Egg	Hot Chocolate Doughnut	French fries Smoked Sausage Stir-Fried Cabbage Yoghurt Fruit in season	Fruit Salad	Rice Roast Chicken Mixed Vegetables
SUNDAY (For Boarders)	Tea, Scones Cornflakes with milk	Tea Arrow Root	Vienna Rice Vegetable Sauce Ice Cream Fruit in season	Juice Cookie	Chapati Steamed Cabbage Vegetable Stew



FEE STRUCTURE FOR LITTLE CABIN

PLAYGROUP (BELOW 3 YEARS) & RECEPTION (3-4 YEARS)

Registration fee	5,000
Caution fee	5,000
Diary (Annual)	850
Book Fund (Annual 3-4 years)	9,855
Book Fund (Annual below 3 years)	7,720
Insurance (Annual)	1,800
Milk (Termly)	980
Termly rate (Full day)	43,500
Termly rate (Half day)	38,500
Daily rate	1,000

Note that the rates shown include a snack at 10:00am and lunch.

Children on full day rates will also receive a snack at 3:30pm.

Caution fee is refundable after official clearance.

Please speak to our Front Office and Admissions Team for a rate based on your requirements.



FEE STRUCTURE FOR KINDERGARTEN, LOWER SCHOOL & MIDDLE SCHOOL

Item	Detail	Frequency of payment	Admission or variable	PP1	PP2	Grade 1	Grade 2	Grade 3	Grade 4	Grade 5	Grade 6
Assessment Fees	Placement Assessment	One off payment	2,000								
Registration	Admissions Processing	One off payment	8,000								
Caution fee	Refundable after official clearance	One off payment	5,000								
ICT Fund	For digital learning	One off payment	10,000								
Insurance	Student Accident Cover	Annual	1,800								
Diary	Enhances communication between school and parents	Annual	850								
Books & Stationery	Materials used during school session	Annual		9,045	9,045	9,755	10,759	11,590	15,996	16,010	16,698
School Fees	Includes tuition, break time snack, lunch, & in-house activities	Termly Cost		40,920	40,920	45,320	45,320	45,320	46,420	49,720	51,920
Milk Program	Optional - Provides 2 packets of milk per student per week	Termly Cost		980	980	980	980	980	980	980	980
Boarding Fees	Optional from Grade 3	Termly Cost Full Boarding		N/A	N/A	N/A	N/A	53,390	53,390	53,390	53,390
		Termly cost weekend away boarding		N/A	N/A	N/A	N/A	45,380	45,380	45,380	45,380
Approximate Termly Fees	Excludes one-off charges & Boarding			41,900	41,900	46,300	46,300	46,300	47,400	50,700	52,900

FEE STRUCTURE FOR JUNIOR SECONDARY SCHOOL

Item	Detail	Frequency of payment	Admission or variable	Grade 7	Grade 8	Grade 9
Assessment Fees	Placement Assessment	One off payment	2,000			
Registration	Admissions Processing	One off payment	8,000			
IT Fund	For digital learning	One off payment	5,000			
Insurance	Student Accident Cover	Annual	1,800			
Diary	Enhances communication between school and parents	Annual	850			
Caution fee	Refundable after official clearance	Paid on admission	5,000			
Books & Stationery	Materials used during school session	Annual	TBC	18,074	18,074	TBC
School Fees	Includes tuition, break time snack, lunch, & in-house activities	Termly Cost		57,635	57,635	TBC
Milk Program	Optional - Provides 2 packets of milk per student per week	Termly Cost		980	980	TBC
Boarding Fees	Optional	Termly Cost Full Boarding		53,390	53,390	TBC
		Termly cost weekend away boarding		45,380	45,380	TBC
Approximate Termly Fees	Excludes one-off charges & Boarding			58,615	58,615	TBC

FEE STRUCTURE FOR AGE-BASED MODIFIED CBC (SPECIAL NEEDS EDUCATION)

[illegible]

FEES STRUCTURE FOR STAGE-BASED CBC (SPECIAL NEEDS EDUCATION)

Item	Detail	Frequency of payment	Admission or variable	Foundation	Intermediate	Pre-vocation	Vocation
Assessment Fees	Placement Assessment	One off payment	5,000				
Registration	Admissions Processing	One off payment	8,000				
Caution fee	Refundable after official clearance	One off payment	5,000				
ICT Fund	For digital learning	One off payment	10,000				
Insurance	Student Accident Cover	Annual	1,800				
Diary	Enhances communication between school and parents	Annual	850				
Learning Resources	Materials used during school session	Termly Cost		4,043	4,043	5,143	6,000
School Fees	Includes tuition, break time snack, lunch, & in-house activities	Termly Cost		52,745	52,745	59,797	59,797
Milk Program	Optional - Provides 2 packets of milk per student per week	Termly Cost		980	980	980	980
Boarding Fees- depending on assessment and recommendation	Optional	Termly Cost Full Boarding		53,390	53,390	53,390	53,390
		Termly cost weekend away boarding		45,380	45,380	45,380	45,380
Approximate Termly Fees	Excludes one-off charges & Boarding			57,768	57,768	65,920	65,920

SCHOOL TRANSPORT SERVICE

- Mirema School provides a safe transport service for children aged 3 years and above, to and from school.
- When transport is required, a pre-visit is arranged to confirm the zone, pick-up and drop-off points, and availability. Rates are dependent on distance from the school.
- Payment for transport is invoiced termly alongside school fees. Transport costs are non-refundable and One-way transport is charged at 80% of the Two-way charge.

ZONE 1	ZONE 2	ZONE 3	ZONE 4	ZONE 5	ZONE 6	ZONE 7	ZONE 8
Ksh 9,628	Ksh 11,851	Ksh 14,072	Ksh 18,517	Ksh 19,986	Ksh 25,907	Ksh 29,607	Ksh 33,309
<div><ul style="list-style-type: none">• Lumumba Drive• Mirema Drive• Mirema Springs• Oakwood• Roysambu• Safari Park Close• Safari Park Gardens• Safari Park View• TRM Area• Zimmerman-A• USIU</div> <div><ul style="list-style-type: none">• The management reserves the right to make changes to transport costs.• Pick up and drop off points are subject to change due to routing logistic.• Transport is charged on a termly basis</div>	<ul style="list-style-type: none">• Zimmerman-B• Police Post• Roysambu Academy• Rurii	<ul style="list-style-type: none">• Blue Springs• Clay City• Garden Estate• Githurai 44• Githurai 45• Homeland• ICIPE• Jacaranda• Kahawa Sukari-A• Kahawa Wendani-A• Kahawa West• Kamiti Prison• Kasarani (Equity)• Kasarani (Police, Naivas)• KBL• Kiamumbi• KISE• Lucky Summer• Marurui• Maziwa• Ngomongo• Ngumba• Seasons• Sports View• Thome• Baba dogo• Willmary• Kiamumbi Rabati Rd• Kiamumbi Aramati• Kiamumbi Pretoria	<ul style="list-style-type: none">• Allsops• Balozi• GSU• Hunters• Kamiti Corner• Membley• Monetary Studies• Muthaiga North• Mwiki• Mwirigo• Ridgeways - Kiambu• Roasters• Ruaka• Sunton• Survey• Thindigua• Kiamumbi Elizabeth Street• Kahawa Sukari- B• Kahawa Wendani Booster• Fourways Kiambu	<ul style="list-style-type: none">• KIST• Ruiru-Bypass• Varsity• Plain view• Ruiru - Mornach• Kihunguro• Tatu City Bamboo, Lifestyle, Unity• Mwihoko• Kamakis• Key-West	<ul style="list-style-type: none">• Gatong'ora• Mutonya• Miti Kenda• Karuguru• Two Rivers• Spur Mall• Green Valley• Muthinga Rd• Silicone• Amalia Gardens	<ul style="list-style-type: none">• Kimbo One 4• Ruiru Greens• Ukombozi	<ul style="list-style-type: none">• Daykio• Gwa Kairu• Kabogo Rd.



CLUB GUIDE

IN HOUSE CLUBS & ACTIVITIES (NO ADDITIONAL COSTS)

- Music & Dance
- Recorder
- Art & Craft
- Culinary Art
- Drama
- Eco & 4K Club
- Book Club
- Maths
- Chess
- NFL Flag
- Swimming
- STEM
- Christian Union

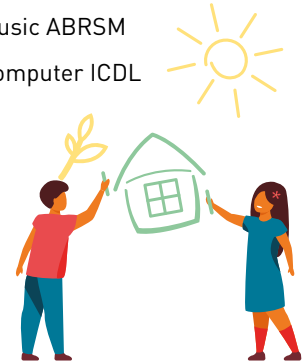
Clubs available vary based in the class; Selection process is done on a yearly basis.

PAID CLUBS & ACTIVITIES (ADDITIONAL COSTS INDICATED)

ITEM	TERMLY COST
Gymnastics	6,500
Ballet Dance	6,500
Guitar	6,500
Piano	6,500
Violin	6,500
Recorder	6,500
Voice	6,500
Martial arts	6,500
Digital design	6,500
Chess	6,500
Performing Arts	6,500
Journalism & Photography	6,500
Fine Arts	6,500

OTHER ACTIVITIES (COSTS VARY BASED ON TERMLY ACTIVITIES)

- Soccer Academy
- Scouts Movement
- Swimming Academy
- NFL Flag
- Music ABRSM
- Computer ICDL



UNIFORM GUIDE

School policy requires that the appropriate school uniform is worn on the first day of school, and going forward. For the convenience of our students and their parents, Mirema School provides majority of the school uniform required on site. Every effort will be made to provide requested uniform in the shortest time possible.

Once issued, all students must wear full school uniform, with P.E. kits and school track-suits worn on appropriate days. On cold days, students may wear a fleece jacket on top of their sweater. Girls may also wear white tights instead of socks.

Uniform is priced per class. An order form is available on request.



OUR ADMISSIONS PROCESS

The process of Admission is straightforward once you express interest in a particular class.



Our Admissions team will confirm availability of a place in the desired class. Should the class be full, you will be placed on the waiting list.



If there is a slot available, we will agree on a suitable date for a placement assessment to be done to ensure that your child is placed in the appropriate class.



The findings from the assessment will be communicated within two working days. You will be required to reserve a slot by paying the Registration Fee.



Admission forms will be issued. Once completed the Onboarding process will commence.

SCHOOL FEES POLICY AND HOW TO MAKE PAYMENTS

BANK PAYMENTS

Payments may be made to the banks listed below, and the bank slip submitted to the account's office as confirmation of payment. Indicate the students' name, class and purpose of payment on the back of the bank slip.

STANDARD CHARTERED BANK;

Muthaiga branch; Account Number 0102018745200

CO-OPERATIVE BANK;

Ridgeways Branch; Account Number 01129096200800

EQUITY BANK;

Ridgeways Branch; Account Number 0710294078290

KENYA COMMERCIAL BANK (KCB);

TRM Branch; Account Number 1116184478

M-PESA PAYMENTS

- Payments made via M-PESA will continue to be made via Pay bill Number 123576
- For Account Number, enter your child's name, class and the purpose of the payment
- The payment confirmation message should be sent to the Accounts Office number 0700331610

NO CASH AND CHEQUE PAYMENTS

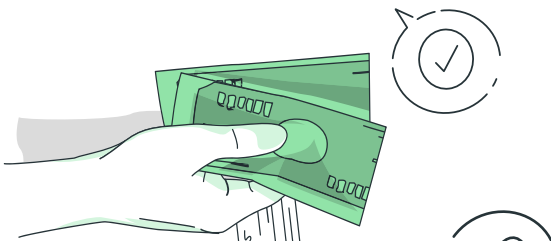
- Cheque payments are not accepted in school
- For security purposes, no cash will be accepted at the school.
- After payment, kindly forward confirmation message to 0700 331 610

SCHOOL FEES POLICY

- An **early payment** discount of **3%** will be applied to the **school fees** item for payments completed in **FULL** before the opening date of the next term.
- **70%** of the term's school fees to be paid **before** the pupil reports for the term and the remaining **30%** to be **cleared** within the **first two** weeks after opening day.
- Students who have not paid **70%** of fees by the **opening day** will not be allowed back in school.
- A surcharge of **5%** will be applied on any **outstanding balance** after the **second week** of opening school.
- Students with **fee arrears** after the second **week** of opening day will not be allowed in school.
- **FOR BOARDERS: 80%** of the fees must be paid before students can be admitted into the boarding house. Any fee **balances** must be cleared before students can get back after the mid-term break –surcharge applies.
- **SIBLING DISCOUNTS:** Second child - 3% off school fees | Third child - 5% off school fees | Fourth child – 8% | Fifth child - 10% off school fees and for any additional child.

The management reserves the right to alter the school fees at reasonable levels and intervals. We take our commitment to you seriously and will notify parents well in advance of any changes.

To reserve a slot a non-refundable payment of registration fee, ICT fund, Insurance, and Diary is required.





OUR CONTACT DETAILS

Phone: +254 716 171 698

admin@miremaschol.ac.ke

 MiremaSchool  MiremaSchoolKE  miremaschoolke  mirema-school  @miremaschool3864

www.miremaschool.ac.ke

